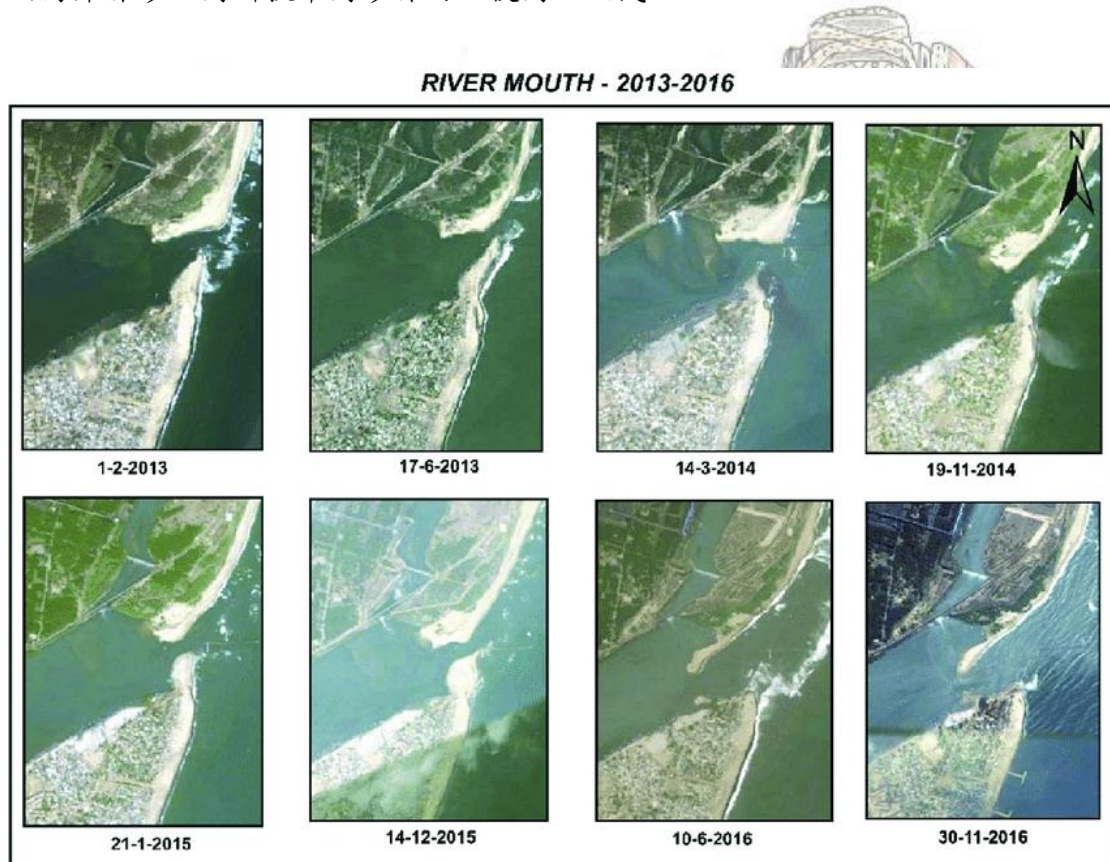


河口淤塞(River-mouth closure)

因海岸漂砂、河川挾帶河砂作用致使河口淤淺。



河口 2013~2016 年變遷，Ennore river mouth, south east coast of India
摘自：

https://www.researchgate.net/publication/332586358_Estuarine_shoreline_change_analysis_along_The_Ennore_river_mouth_south_east_coast_of_India_using_digital_shoreline_analysis_system



載滿貨品的驢子



阿拉丁神燈

回分類索引

回海洋工作站